

**Adaptation of the specifications for the disassembly  
and assembly of the freewheel unit (WS200171)**

**WS-Bike-E-Motion GmbH**



---

**Bike-E-Motion**

**Version:** V1.0

**From:** 23.12.2024

# Changes to the disassembly and assembly procedure for the freewheel unit

## General information:

All freewheel units delivered up to and including 2024 were supplied without a threaded hole and therefore also without a grub screw with hexagon socket. This will change from 2025: From now on, every freehub sleeve will be equipped with a thread! This thread is used to secure the freewheel to the output shaft (at the gearbox output), preventing it from slipping downwards during operation. This is another step towards providing you with a more durable and improved product.

In the case of pre-assembled motor-gearbox units (e.g. WS200101), we have already implemented this new fastening method. If you need to remove the freewheel unit for repair or maintenance, please follow the instructions below. Even if you purchase the freewheel unit from us as a spare part, please carry out the installation as described in future.

Note: The new freewheel version is universally applicable and can be used on all WS-Bike and Vivax motors.

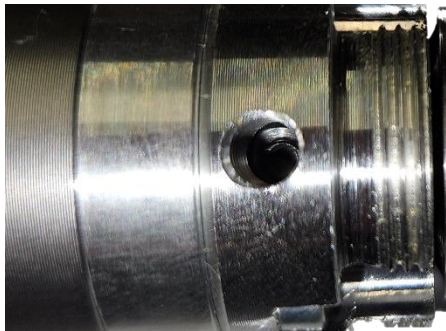
Note: M3 grub screws are used. Please ensure that the appropriate tightening torque of approx. 1 Nm is maintained.

### Assembly of the new version

1. screw the grub screw into the threaded hole if this has not already been done. Make sure that the screw is not screwed in too deeply so that the freewheel can be pushed on without any problems.
2. slide the freewheel onto the output shaft of the gearbox (as far as possible).



3. turn the freewheel until the motor mounting threads (M6 thread) are aligned with the grub screw



4. tighten the grub screw using a suitable Allen key.



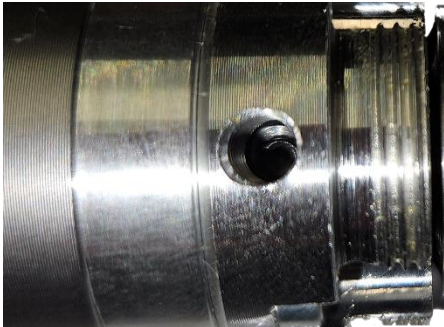
5. mount the bevel gear mounting sleeve (aluminum sleeve) as usual and mount the drive as usual.

### Disassembly of the new version

1. remove the bevel gear mounting sleeve (aluminum sleeve) by turning it to remove it.



2. turn the freewheel around the axis of rotation until the holes for the motor mounting screws (M6) are aligned with the hole for the grub screw (see illustration).



3. insert the appropriate Allen key into the hole and loosen the grub screw that secures the freewheel.



4. the freewheel sleeve can now be pulled out.

